

FALL/WINTER 2020-21

IDENTITY

WOMEN'S YOGAWEAR

DESIGN DIRECTION

SENSIL®

SEAMLESS
& HOSIERY
COLLECTION



PA 2208

TS 2208

The draped top and wide-banded pants are super soft and cool, providing exceptional comfort during heated indoor workouts.

Knitted with Breeze yarn for cooling and ultra-fine filament yarns for a buttery-soft touch.

The specially-engineered wide-banded waist won't roll down.

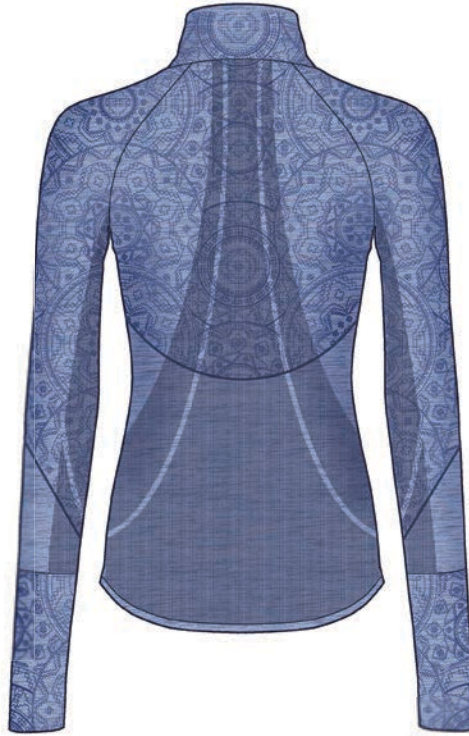
FALL/WINTER 2020-21

IDENTITY

WOMEN'S YOGAWEAR

DESIGN DIRECTION

CULTURAL REMIX
R E S P E C T
O R I G I N S
S U S T A I N A B I L I T Y
H O N O R



19-4342 TPX

17-3923 TPX

GROUP 8
2208

WOMEN'S
YOGAWEAR

YARNS

BREEZE

ULTRA FINE
FILAMENT YARNS

NILIT®

FALL/WINTER 2020-21

DARING

WOMEN'S GYMWEAR

DESIGN DIRECTION

SENSIL®

SEAMLESS
& HOSIERY
COLLECTION



This group features mesh for ventilation, ribbing under the bust and on the racer back for extra support, and a textured pattern to mask sweat marks.

The sport bra is knitted with Aquarius moisture management yarn in the inside, shiny, two-color heather fibers on the outside, and Eversheer-covered spandex for increased durability in the sheer mesh area.

The contoured leggings are knitted with shiny heather fibers on the outside.

FALL/WINTER 2020-21

DARING

WOMEN'S GYMWEAR

DESIGN DIRECTION

OPPOSITES ATTRACT
TACTILITY
REBELLIOUS
PIC 'N' MIX
UNRULY



BR 2201

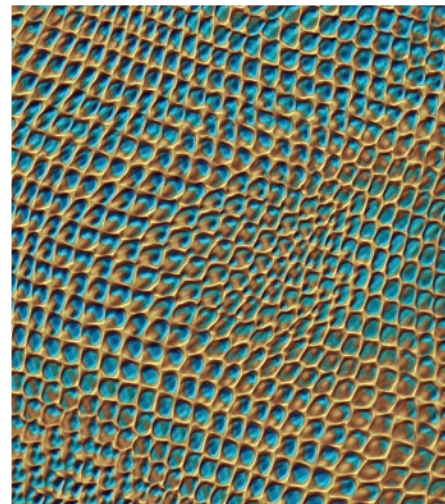


PA 2201



GROUP 1 2201

WOMEN'S
GYMWEAR



YARNS

AQUARIUS

SHINY HEATHER
FIBERS

EVERSHEER

NILIT®

SENSIL®

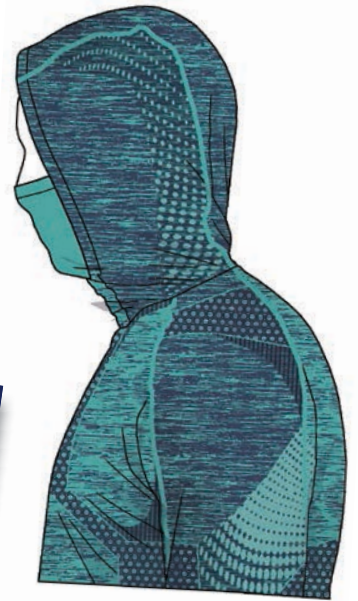
**SEAMLESS
& HOSIERY
COLLECTION**

FALL/WINTER 2020-21

DEXTROUS

MEN'S COLD WEATHER RUNNING SUIT

DESIGN DIRECTION



The ribbed construction provides support in the shoulder, chest and back areas and exceptional fabric drape.

Front zipper allows for easy loosening and removal.

The two-color mélange appearance is achieved with Duomix (stripy version). Add black dope-dyed yarn to the mix for a dramatic third color effect.

Hood is added for warmth in cold weather.

FALL/WINTER 2020-21

DEXTROUS

MEN'S COLD WEATHER RUNNING SUIT

DESIGN DIRECTION

ACCELERATE
SPORTS
ENHANCEMENT
EXPERIENCE
CONNECTION
MULTI FUNCTIONALITY



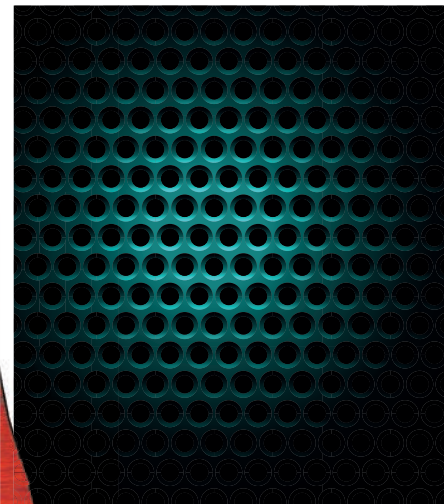
PA 2203



TS 2203

GROUP 3
2203

MEN'S
COLD WEATHER
RUNNING SUIT



YARNS

DUOMIX STRIPY
NYLON SOFT BLACK

NILIT®

SENSIL®

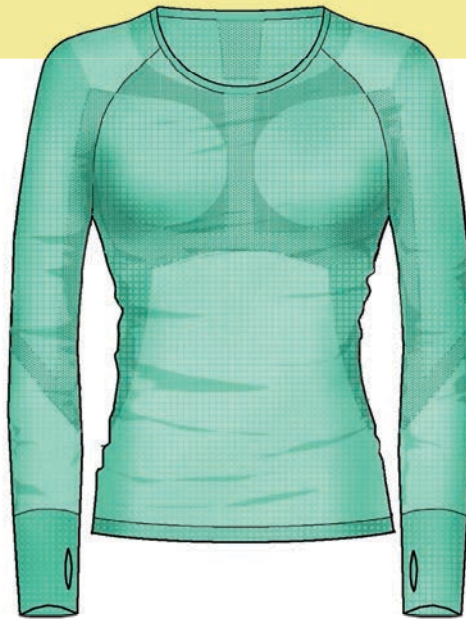
**SEAMLESS
& HOSIERY
COLLECTION**

FALL/WINTER 2020-21

DEXTROUS

BASE LAYER FOR WINTER SPORTS

DESIGN DIRECTION



TS 2209



PA 2209



13-5412 TPX

This garment is made with Heat thermal yarns for sustainable and comfortable insulation during winter sports.

Soft and smooth, with a mélange effect achieved through the use of Heat's special heather yarns.

The ribbed design under bust and compression zones near leg muscles provide added support, while the waist band on pants gives added stability and comfort.

FALL/WINTER 2020-21

DEXTROUS

BASE LAYER FOR WINTER SPORTS

DESIGN DIRECTION

ACCELERATE
SPORTS
ENHANCEMENT
EXPERIENCE
CONNECTION
MULTI FUNCTIONALITY



TS 2209



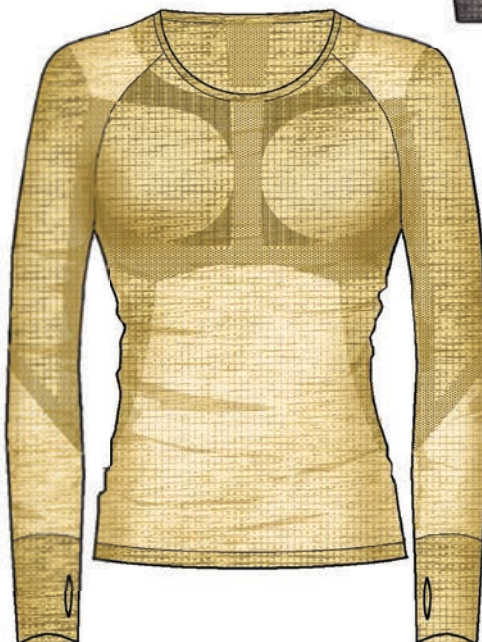
19-1662 TPX



18-4005 TPX



PA 2209



12-0721 TPX

GROUP 9
2209

BASE LAYER
FOR WINTER
SPORTS

YARNS

HEAT MÉLANGE

NILIT®

FALL/WINTER 2020-21

PARITY

MEN'S UNDERWEAR

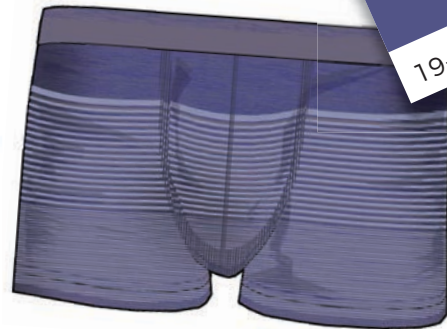
DESIGN DIRECTION

SENSIL®

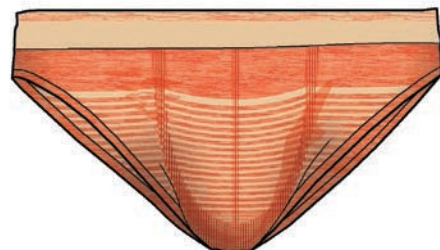
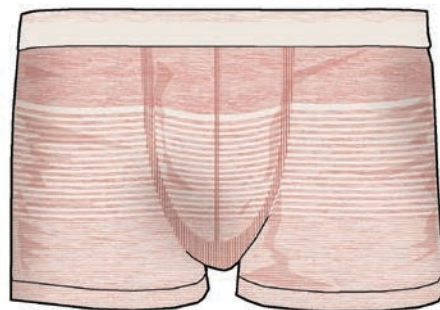
SEAMLESS
& HOSIERY
COLLECTION



TS 2202



BX 2202



These shirts and briefs are made from a comfortable performance-enhancing mélange of Arafelle and ultra-fine-filament yarns.

The fabric is very soft to the touch, and Spandex-free for a loose, comfortable fit and flattering drape.

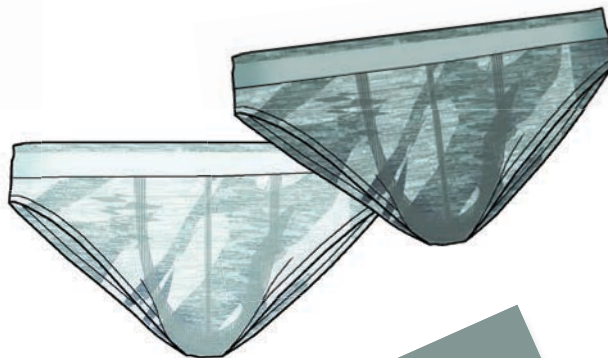
FALL/WINTER 2020-21

PARITY

MEN'S UNDERWEAR

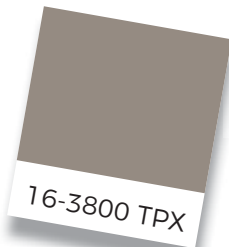
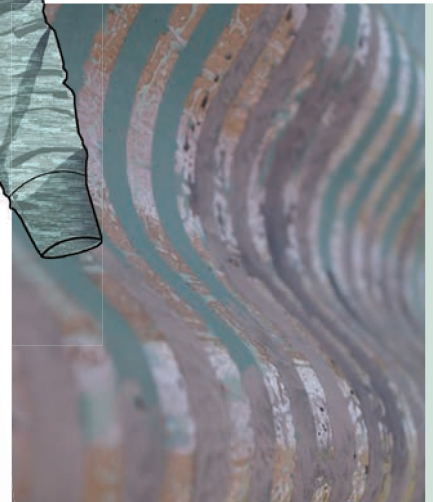
DESIGN DIRECTION

KEEP IT REAL
BALANCE
SENSIBILITY
CARESS
NATURAL
SENSUAL



GROUP 2 2202

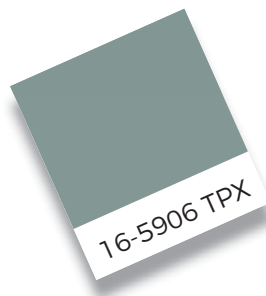
MEN'S
UNDERWEAR



16-3800 TPX



12-6205 TPX



16-5906 TPX

YARNS

ARAFELLE

ULTRA FINE
FILAMENT YARNS

NILIT®

FALL/WINTER 2020-21

FASCINATE

WOMEN'S WORKOUT DESIGN DIRECTION

SENSIL®

SEAMLESS
& HOSIERY
COLLECTION



Knitted with Diamond and Colorwise yarn for an opaque effect that shimmers and shines.

The mesh selection is achieved via Colorwise. The use of Diamond adds a two-tone glitter.

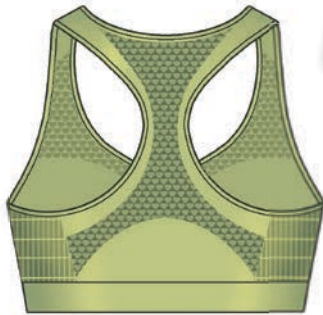
FALL/WINTER 2020-21

FASCINATE

WOMEN'S WORKOUT

DESIGN DIRECTION

FANTASY
AMBITION
GOALS
GLOSS
GUILT-FREE
LIVING

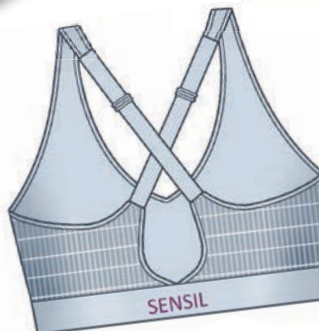
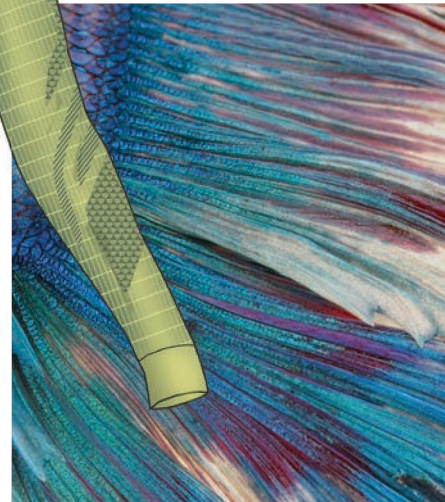


TS 2206

GROUP 6

2206

WOMEN'S
WORKOUT



PA 2206

YARNS

DIAMOND

COLORWISE

NILIT®

FALL/WINTER 2020-21

STIMULATE

MEN'S TRIATHLON SET

DESIGN DIRECTION

SENSIL®

SEAMLESS
& HOSIERY
COLLECTION



PA 2204



13-5410 TPX

13-5714 TPX



BLACK

TS 2204



Knitted with Innergy far-infrared yarns that provide invigorating performance benefits and Pastelle for color styling.

Designed with compression zones comprised of rib areas, pique and tucks for extra support in shirts and pants. Mesh areas provide extra ventilation.

The jacket has a full zipper in front for easy removal.

Dyed in two colors - black (Innergy) and blue (Pastelle).

FALL/WINTER 2020-21

STIMULATE

MEN'S TRIATHLON SET

DESIGN DIRECTION

ACCELERATE
SHINE
ILLUMINATE
PRECISION
TECHNICITY

GROUP 4
2204

MEN'S
TRIATHLON SET



13-0650 TPX

18-4434 TPX

YARNS

INNERGY

PASTELLE

NILIT®

FALL/WINTER 2020-21

STIMULATE

MEN'S WORKOUT

DESIGN DIRECTION

SENSIL®

SEAMLESS
& HOSIERY
COLLECTION



PA 2205



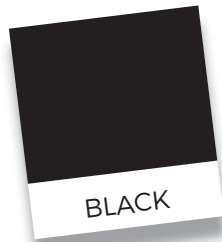
13-5410 TPX



TS 2205

Knitted with Black Diamond and Britex yarns for a comfortable metal-like shine.

The design includes color blocks, with zones of mesh and pique for ventilation and support.



BLACK



13-0650 TPX

FALL/WINTER 2020-21

STIMULATE

MEN'S WORKOUT

DESIGN DIRECTION

ACCELERATE
SHINE
ILLUMINATE
PRECISION
TECHNICITY



PA 2205



TS 2205

GROUP 5
2205

MEN'S
WORKOUT

YARNS

BLACK DIAMOND

BRITEX

NILIT®